

# Osaka Prefecture University International House Application Guidelines for Residence in 2016-2017 (International Students)

Applications for housing are invited from international students scheduled to enroll at OPU in the Second Semester of Academic Year 2016-2017 and international students currently enrolled at OPU. Details are indicated below:

## 1. Eligibility

Those who fall under any of the following categories shall qualify.

- ① An international students currently enrolled at OPU (whose status of residence is “Student” (*Ryugaku*)) and planning to continue his/her studies in Academic Year 2016-2017.
- ② An international student who wish to enroll at OPU in the Second Semester of Academic Year 2016-2017 (starting September 26, 2016) and who have obtained or expect to obtain “Student” (*Ryugaku*) resident status in Japan

## 2. Number of Vacancies

Men: 10 rooms, Women: 2 rooms

- \* Each self-contained unit consists of four same-gender single rooms, with a kitchen, dining room, shower room, and toilet shared among the four residents.
- \* Each single room is furnished with a bed, desk and other necessary furniture. (See reverse)

## 3. Date of Move-in, Move-out

	Date of Move-in	Date of Move-out
Enrolled Students	August 1, 2016 ~	<u>March 25, 2017 or September 15, 2017</u>
New Students & Enrolled Students	September 20, 2016	<u>March 25, 2017 or September 15, 2017</u>

※Please be careful with the dates indicated below as “Date of Move-out”. For the enrolled students, the move-in date will be negotiable.

## 4. Rent and Other Charges (Monthly)

Rent	Common-area charge (including utility costs)	Total
29,000 yen	8,800 yen	37,800 yen

- \* In addition to the above fees, residents must pay a deposit of 37,800 yen (equivalent to one month’s rent and charge) when moving in.
- \* The deposit paid will be used for the rent and common-area charge for the month in which the resident moves out.

## 5. How to Apply, Application Deadline and Notification of the results

Complete the Application for Admission to OPU Accommodation, and submit it to the Student Affairs Division, together with the following documents;

International students currently enrolled at OPU	International students scheduled to enroll at OPU
① Application form	① Application form
② Student ID	② A copy of the certificate of admission or the notice of passage for the entrance exam (A copy of the admission ticket for the entrance

	exam if you have not gotten the result of the entrance exam yet.)
③ A health certificate including chest X-ray result (issued within the last six month from a medical institution etc.)	③ A health certificate including chest X-ray result (issued within the last six month from a medical institution etc.)

【First closing date】 : Friday, July 15, 2016

⇒ Notification of results will be in the end of July 2016

【Second closing date】 : Friday, August 26, 2016

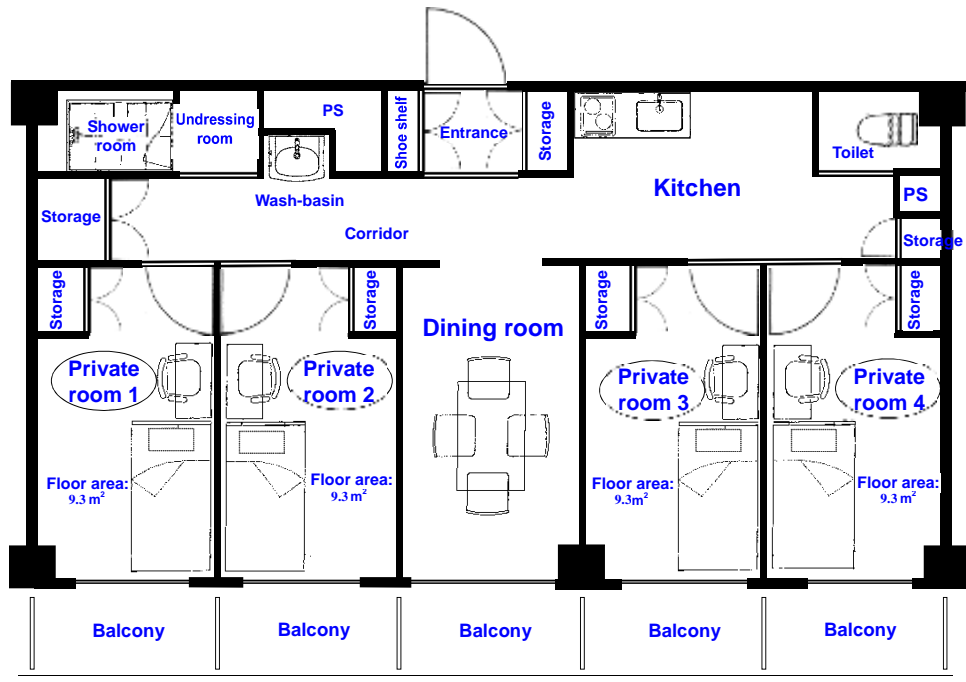
⇒ Notification of results will be in the early September 2016.

\* Applicants submitting their applications for housing before university admission formalities will be contacted after the completion of admission procedures to confirm their intention of residing at the International House.

## 7. Detailed information on International House

Address	1-1 Gakuen-cho, Naka-ku, Sakai City, Osaka (Nakamozu Campus Building B17)
Structure	3-story, steel construction Mixed gender accommodation (each unit shared by same-gender residents)
Total number of rooms	80 private rooms (single rooms) (20 units: each unit consists of four same-gender private rooms)
Floor area of room/unit and furniture/fixtures	[Private room: 9.3 m <sup>2</sup> ] Single bed, mattress, desk, chair, lighting, closet, air conditioner, curtains, etc. * Bedding rental service is available: 1,296 yen/month
	[Shared area of unit: 33.4 m <sup>2</sup> ] Kitchen (refrigerator, microwave oven, IH cooking heater, cooking utensils, cupboard) Dining room (table, chairs, air conditioner) Shower room, toilet, wash-basin, vacuum cleaner, etc.
Common facilities/equipment for the accommodations as a whole	Coin-operated washing and drying machines (pay) Internet access: wireless LAN service (864yen/month ~) Bicycle parking lot
Security	Auto-lock system (No curfew, 24-hour-a-day access) House manager support available (12:00 – 21:00 on weekdays) Call center support available in multiple languages at night and on holidays

Layout of unit



6. Inquiries: Student Affairs Group, Student Affairs Division ( Bldg. A3, 2nd Floor B-counter, Tel: 072-254-6243)